



**SPITZNAS**  
CUSTOMIZED POWER SOLUTIONS

# Electric Reciprocating Saw

Type 5 1215 0070

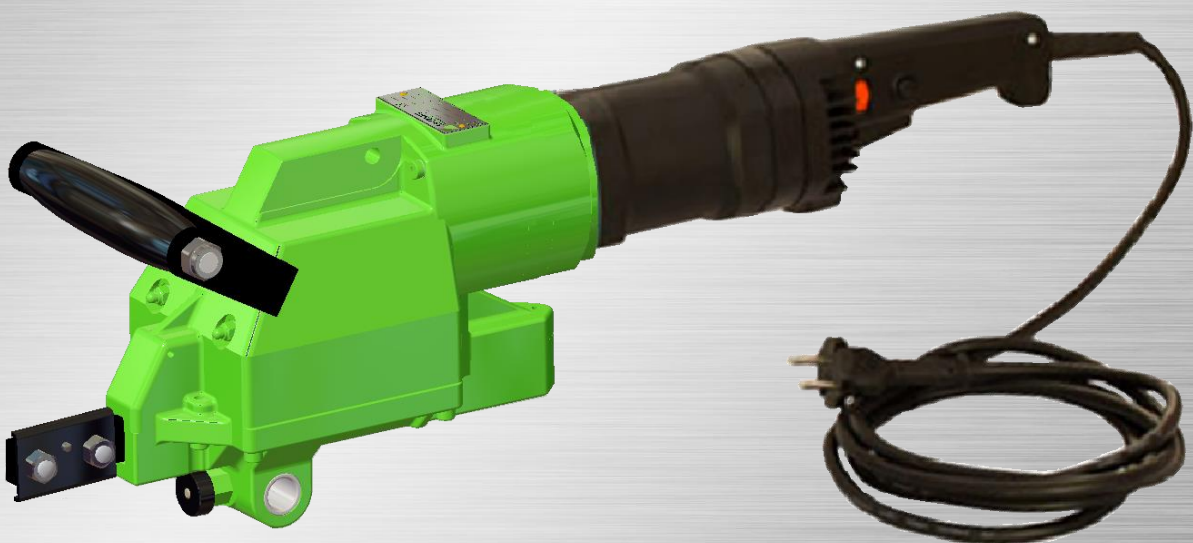


Illustration can differ from the original

## Spare Parts List



### Spare Parts List

Description: <b>Electric Reciprocating Saw</b>	Part and Drawing Number: <b>5 1215 0070</b>
---	--

Item	Qty.	Description	Part and Drawing No.		Remarks
	1	Drive unit for reciprocating saw 110 V	5 1215 1000		
	1	Gearbox for reciprocating saw	5 1215 4000		
	1	Type label	9 3101 0080		
	2	Round head grooved pin	9 1628 0040		
	1	Spanner AF 13	9 1301 0160		
	1	Carrying case	9 9910 0080		

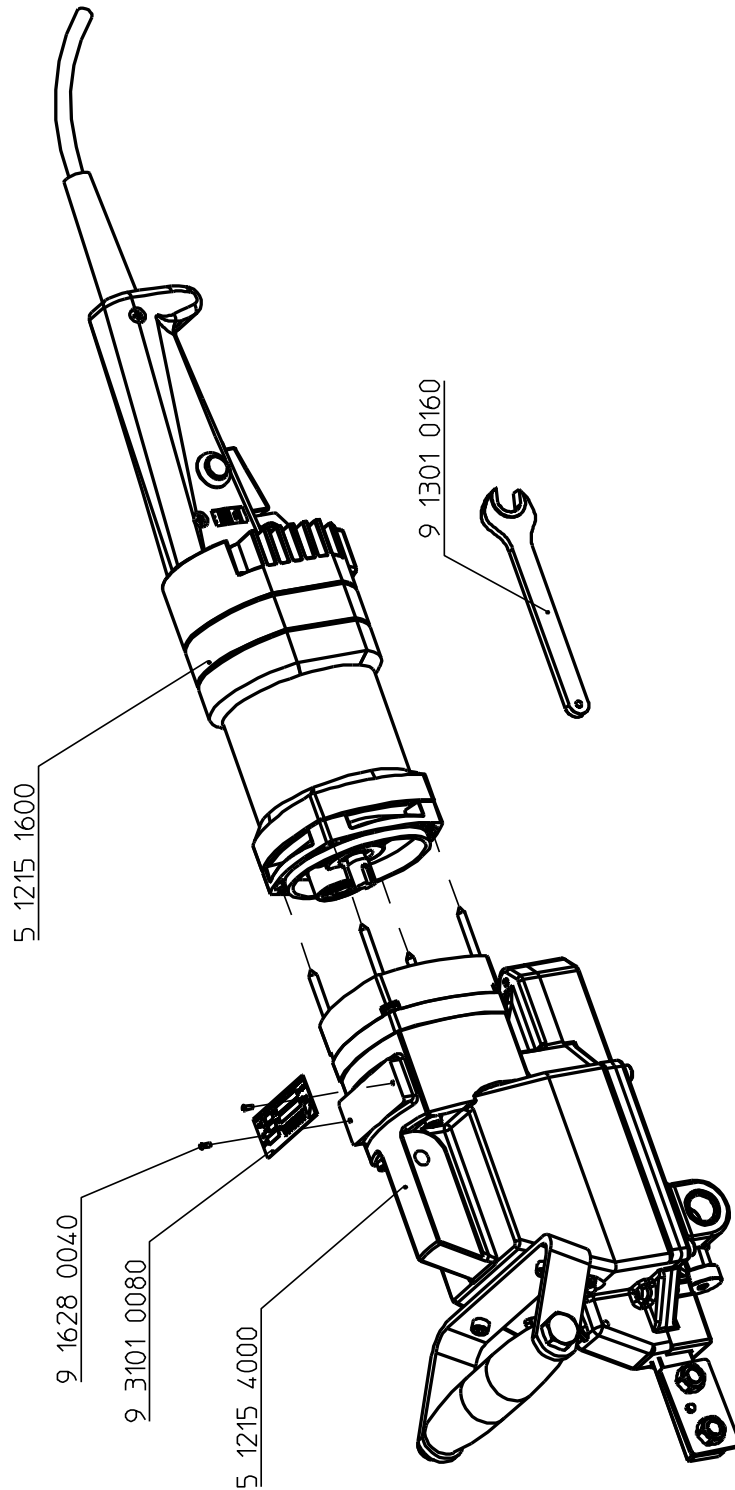
### Spare Parts List

Description:

Electric Reciprocating Saw

Part and Drawing Number:

5 1215 0070



<b>Spare Parts List</b>					
Description: <b>Drive unit for reciprocating saw</b> 110 V				Part and Drawing Number: <b>5 1215 1600</b>	
Item	Qty.	Description	Part and Drawing No.		Remarks
1	1	Connecting line	5 1215 9010		
2	1	Cable exit bushing	5 1215 9020		
3	1	Handle cap	5 1215 6030		
4	1	Built-in switch	5 1215 6040		
5	1	Dejam condensor	5 1215 9030		
6	1	Stress relief clip collar	5 1215 9040		
7	2	Sheet metal screw cylindric	9 1135 9250		
8	1	Air guide ring	5 1215 9110		
9	1	Variable resistor	5 1215 9060		
10	3	Sheet metal screw	9 1135 9260		
11	8	Sheet metal screw	9 1135 9270		
12	1	Intermediate piece	5 1215 1140		
13	1	Printed board	5 1215 9070		
15	1	Motor housing	5 1215 1010		
16	1	Mount	5 1215 1170		
17	2	Sheet metal screw cylindric	9 1135 9280		
18	2	Pole ring, assy.	5 1215 9080		
19	2	Sheet metal screw cylindric	9 1135 9290		
20	2	Pocket brush holder, assy.	5 1215 9090		
21	2	Carbon brush	5 1215 9100		
22	4	Thread grooving screw	9 1135 9350		
23	4	Spring lock washer	9 3314 0140		
25	1	Air guide ring	5 1215 9110		
27	1	Rotor, Assy.	5 1215 1030		
28	1	Grooved ball bearing	9 1001 0140		
29	1	O-Ring	9 1921 2870		
30	1	Snap ring	9 1702 0050		
31	1	End shield gearing	5 1215 1180		
32	1	Grooved ball bearing	9 1003 0370		
33	1	Snap ring	9 1703 0070		

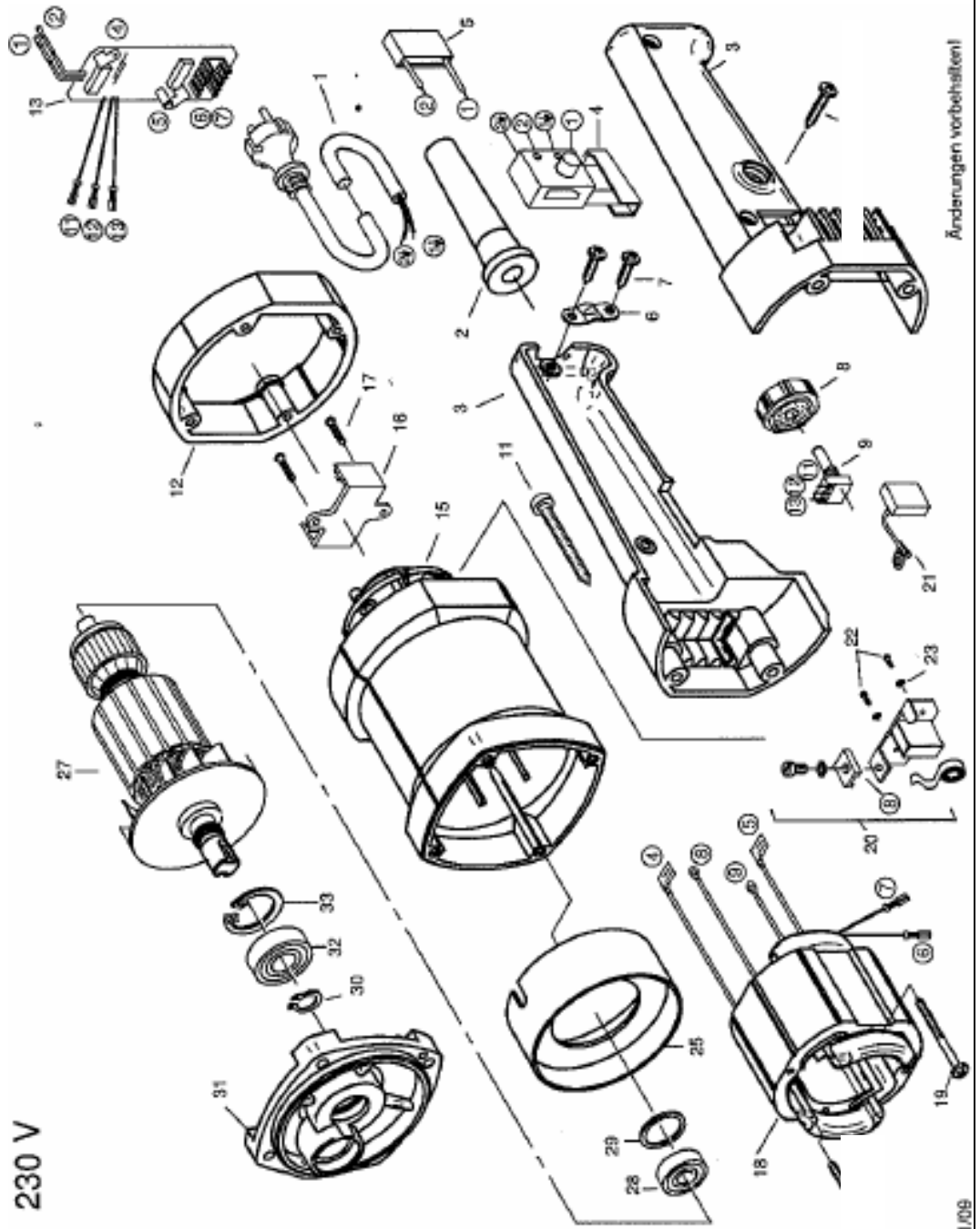
### Spare Parts List

Description:

**Drive unit for reciprocating saw**  
110 V

Part and Drawing Number:

**5 1215 1600**



11/09

<b>Spare Parts List</b>					
Description:				Part and Drawing Number:	
<b>Gearbox for reciprocating saw</b>				<b>5 1215 4000</b>	
Item	Qty.	Description	Part and Drawing No.		Remarks
30	1	Gearbox housing, assy.	5 1205 4910		with item 31
31	1	Sliding bearing	9 1029 0150		
43	1	Grooved ball bearing	9 1003 0370	*	
45	1	Snap ring	9 1702 0090		
46	1	Bevel gear, assy.	5 1202 4920		
47	1	Compensating ring	5 1202 4140		
47	1	Compensating ring	5 1202 4340		
49	1	Compensating ring	5 1202 4150		
49	1	Compensating ring	5 1202 4350		
50	1	Feather key	9 1501 2080		
	1	Crankshaft, assy.	5 1202 4930		
51	1	Crankshaft	5 1202 4160		
52	1	Bolt	5 1202 4170		
53	1	Bearing, assy.	9 1025 0200		
55	1	Washer	5 1202 4490		
56	1	Snap ring	9 1702 0050		
58	1	Grooved ball bearing	9 1004 0270	*	
59	1	Hexagon nut	9 1210 0010		
62	1	Bearing plate	5 1213 4220		
63	1	Snap ring	9 1703 0120		
64	1	Grooved pin	9 1626 0180		
65	4	Fillister-head screw	9 1110 3120		
66	4	Locking plate	9 3329 0890		
68	1	Washer	9 3325 0890		
	1	Gearbox cover, assy.	5 1202 4940		
70	1	Gearbox cover	5 1202 4090		with item 71-72
71	1	Bearing bushing	5 1206 4098		
72	1	Locking device	5 1201 7920		
	1	Connecting rod, assy.	5 1202 4950		
77	1	Connecting rod	5 1202 4260		
78	1	Rocker arm	5 1202 4270		
79	2	Fillister-head screw	9 1110 4040		
80	1	Half length taper grooved pin	9 1624 0470		

<b>Spare Parts List</b>					
Description:				Part and Drawing Number:	
<b>Gearbox for reciprocating saw</b>				<b>5 1215 4000</b>	
Item	Qty.	Description	Part and Drawing No.		Remarks
81	2	Threaded pin	5 1202 4280		
82	1	Pressure plate	5 1201 7060		
83	2	Hexagonal nut	9 1203 0050		
84	4	Washer	9 3302 0020		
85	2	Adapter sleeve	9 1632 0010		
86	2	Spring washer	9 3312 0020		
87	2	Hexagonal nut	9 1203 0040		
88	1	Fillister-head screw	9 1110 3030		
89	8	Fillister-head screw	9 1110 3120		
90	1	Sliding bearing	5 1206 4300		
91	2	Scraper	9 1902 0490		
92	1	Felt packing	9 1902 0500		
93	2	Stud bolt	9 1643 0010		
94	2	Cap nut	9 1211 0020		
95	13	Locking plate	9 3329 0010		
	1	Handle, assy.	5 1202 6000		
961	1	Crank handle	5 1202 6010		
962	1	Frame	5 1202 6020		
964	1	Hexagonal screw	9 1106 6090		
965	1	Hexagonal nut	9 1210 0020		
97	2	Fillister-head screw	9 1110 3090		
98	2	Fillister-head screw	9 1110 3080		
100	1	Rim of the gear	5 1215 4020		
101	1	Grooved pin	9 1626 0060		
102	2	Slotted fillister-head screw	9 1115 1020		
103	1	Planet carrier	5 1215 4030		
104	1	Grooved ball bearing	9 1001 0510	*	
105	2	Double-planetary wheel	5 1215 4040		
106	4	Needle cage	9 1015 0160		
107	2	Bearing needle	9 1016 0480		
108	1	Grooved ball bearing	9 1002 0070	*	
109	1	Grooved ball bearing	9 1003 0010	*	
110	1	Plug-in pinion	5 1215 4170		

**Spare Parts List**

Description: <b>Gearbox for reciprocating saw</b>	Part and Drawing Number: <b>5 1215 4000</b>
--	--

Item	Qty.	Description	Part and Drawing No.	Remarks
111	1	Feather key	9 1501 1120	
112	1	Intermediate housing	5 1215 7510	
113	8	Fillister-head screw	9 1112 3030	
114	1	End plate	5 1202 1130	
115	1	Felt stripe	9 1902 0470	
116	1	Coupling	5 1215 4190	
117	1	Connecting cover	5 1215 7530	
118	4	Sheet metal screw cylindric	9 1135 9240	
119	2	Feather key	9 1501 2100	
		* Wear parts to be stored in case of		
		continuous use		



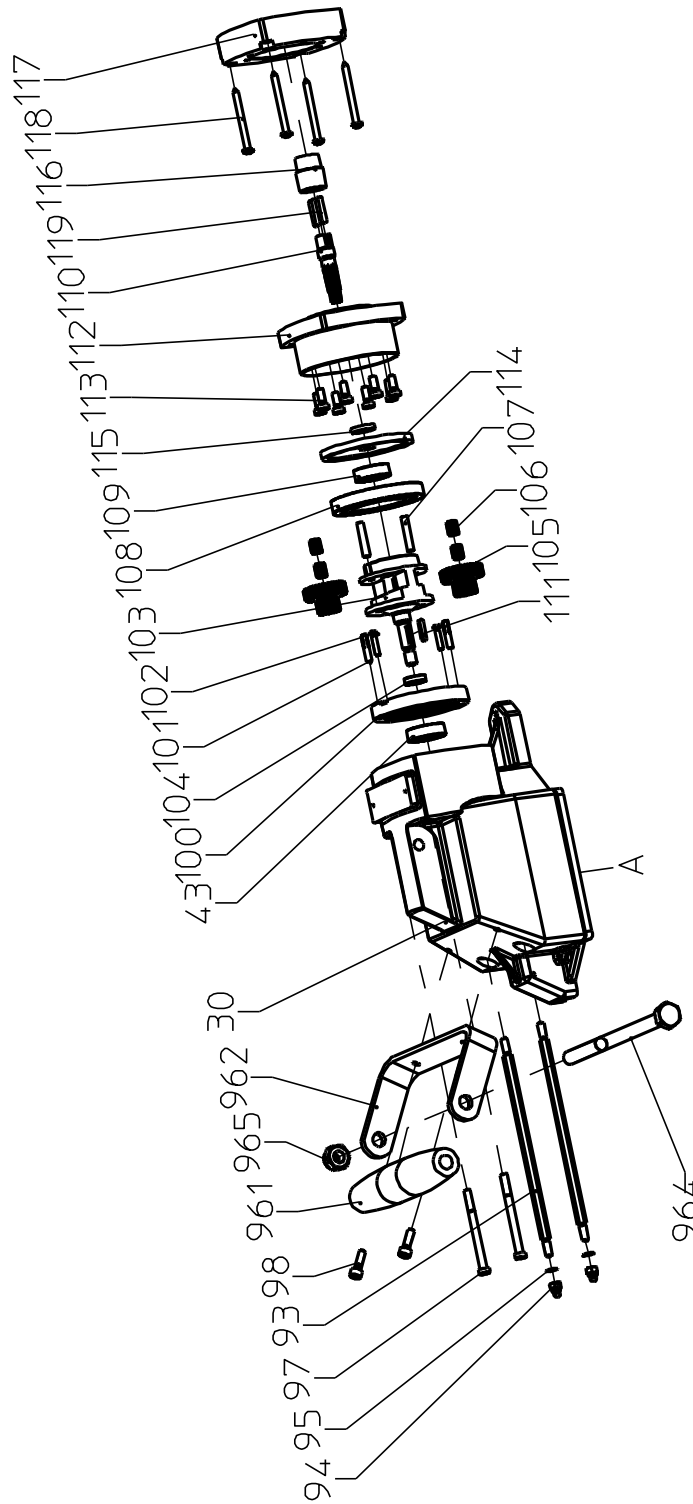
### Spare Parts List

Description:

**Gearbox for reciprocating saw**

Part and Drawing Number:

**5 1215 4000**



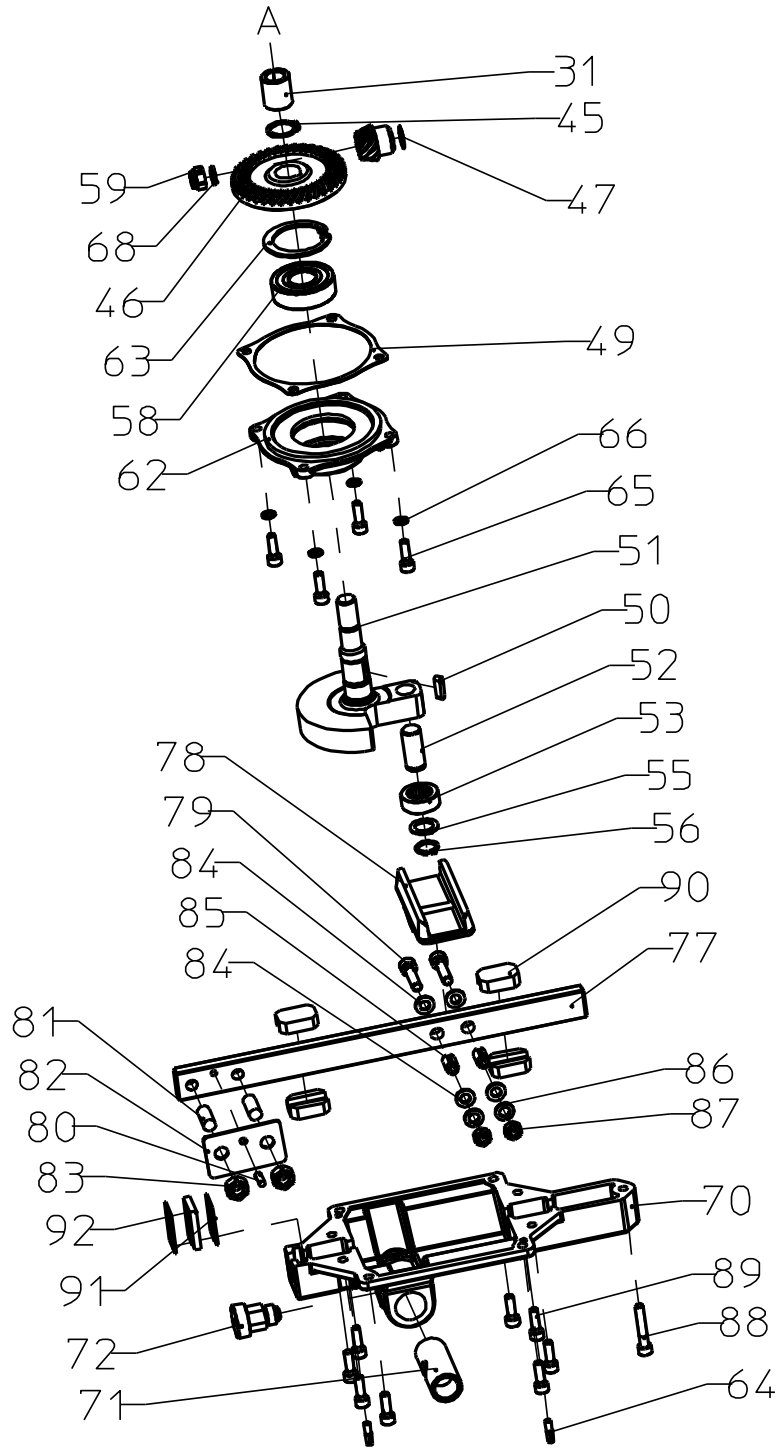
### Spare Parts List

Description:

**Gearbox for reciprocating saw**

Part and Drawing Number:

**5 1215 4000**



Notiz:



Maschinenfabrik GmbH  
Fellerstraße 4, 42555 Velbert  
Germany

Tel.: +49 2052 605 0  
Fax: +49 2052 605 29  
E-Mail: [spitznas@spitznas.de](mailto:spitznas@spitznas.de)  
[www.spitznas.de](http://www.spitznas.de)

Tools for the Specialist