

# HYCON HPP09 POWER PACK



## PRODUCT FEATURES

The HPP09 operates any 20 lpm tools such as breakers, saws, pumps and core drills at maximum performance. Featuring a hydraulic throttle control system (Power On Demand) that automatic speeds up the engine when the connected tool is activated.

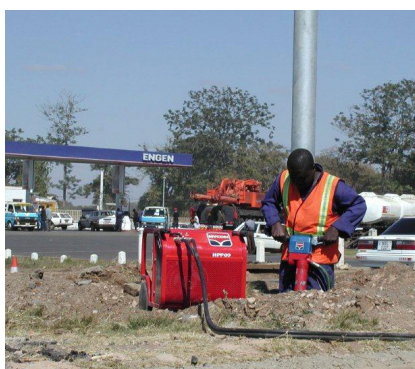
This power pack is very popular for the rental business, contractors, municipalities and supply companies.

It is very compact, which enables transportation in the back of a car or in a van. The investment in this power pack and a breaker is usually less than half the price of a 4m<sup>3</sup> compressor and breaker, and the performance is the same.

The power pack has an integrated oil alert on engine oil level.

## HYDRAULIC POWER PACK HPP09

Item no. HPP09	2020009
Oil flow, l.p.m.	1x20
Max pressure, bar	150
Engine	Honda 9.0 HP Gasoline
Starter	Recoil
Dimensions: LxWxH, mm / Weight, kg	680x560x593 / 81
Noise level 1m LPA dB	88
Noise level 1m LWA dB	100



Contact us for more information:  
[hycon@hycon.dk](mailto:hycon@hycon.dk) / +45 96 47 52 00

## THE HYCON PRODUCT RANGE

CUT-OFF AND RING SAWS • CORE DRILLS • POST DRIVERS • PICK HAMMER • LIGHT & HEAVY DUTY BREAKERS  
SUBMERSIBLE PUMPS • ROCK DRILLS • UNDERWATER EQUIPMENT • GASOLINE, DIESEL AND ELECTRIC POWER PACKS



HYCON A/S  
Juelstrupparken 11  
DK-9530 Støvring

Tel +45 9647 5200  
Fax +45 9647 5201  
[www.hycon.dk](http://www.hycon.dk)

**DISTRIBUTOR:**